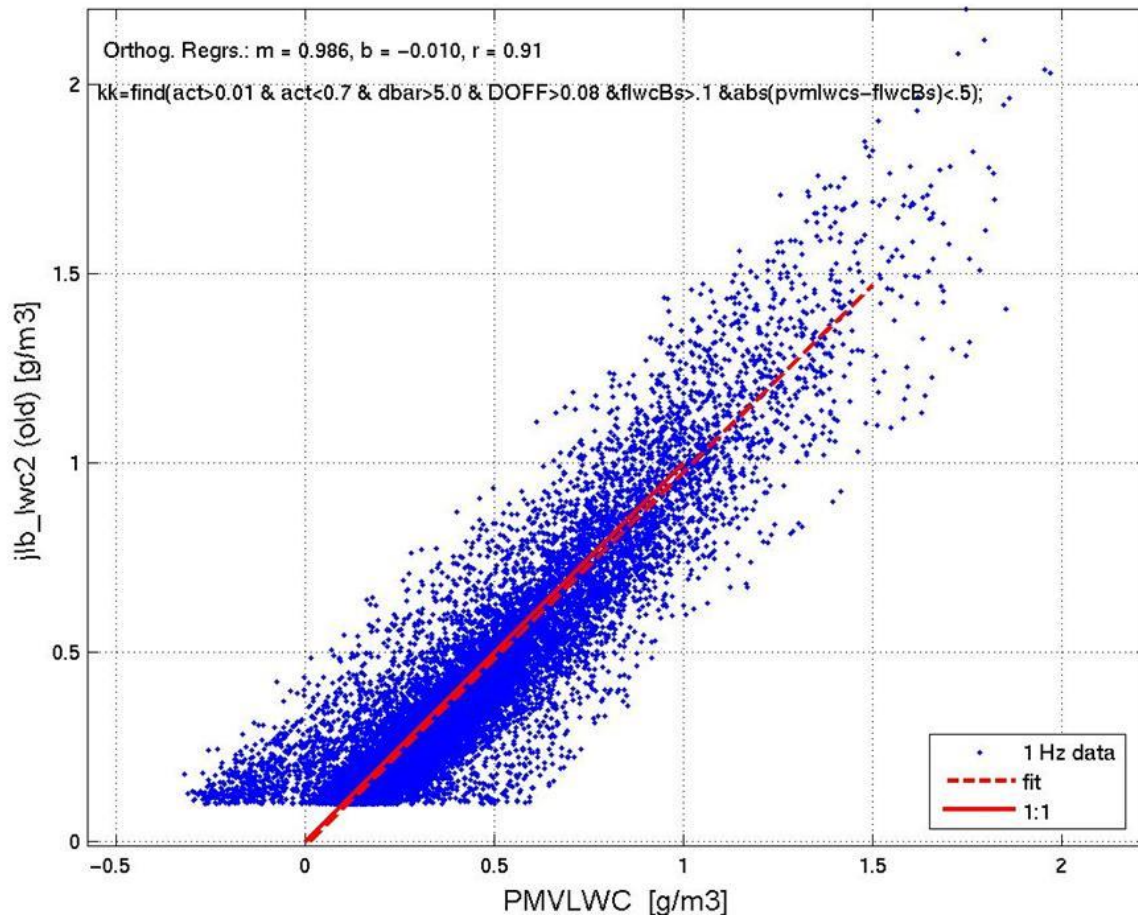


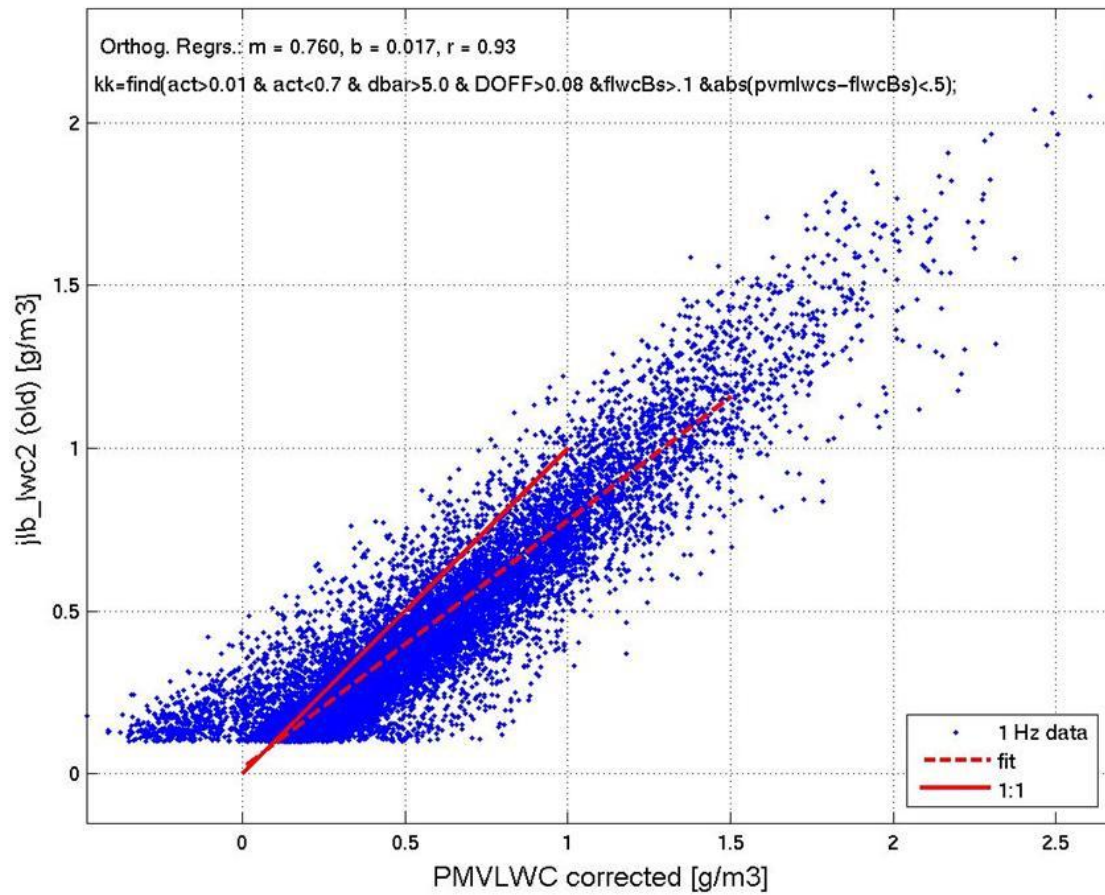
## UWKA in RICO

- **UW project manager for RICO: Larry Oolman**
  - [ldoolman@uwyo.edu](mailto:ldoolman@uwyo.edu)
  - 307-766-2665
- <http://flights.uwyo.edu/projects/rico04>
  - Login/password rico/antigua
  - 1 Hz and 25 Hz data sets
- **Problems:**
  - Air conditioner prob in Phase I – some flights have multiple files – otherwise ok
  - Water in gust probe in several flights –easy to detect.
  - GPS (Trimble Vee-Six) – intermittent on some flights – affects the horiz wind correction
- **LWC**
- **Winds**

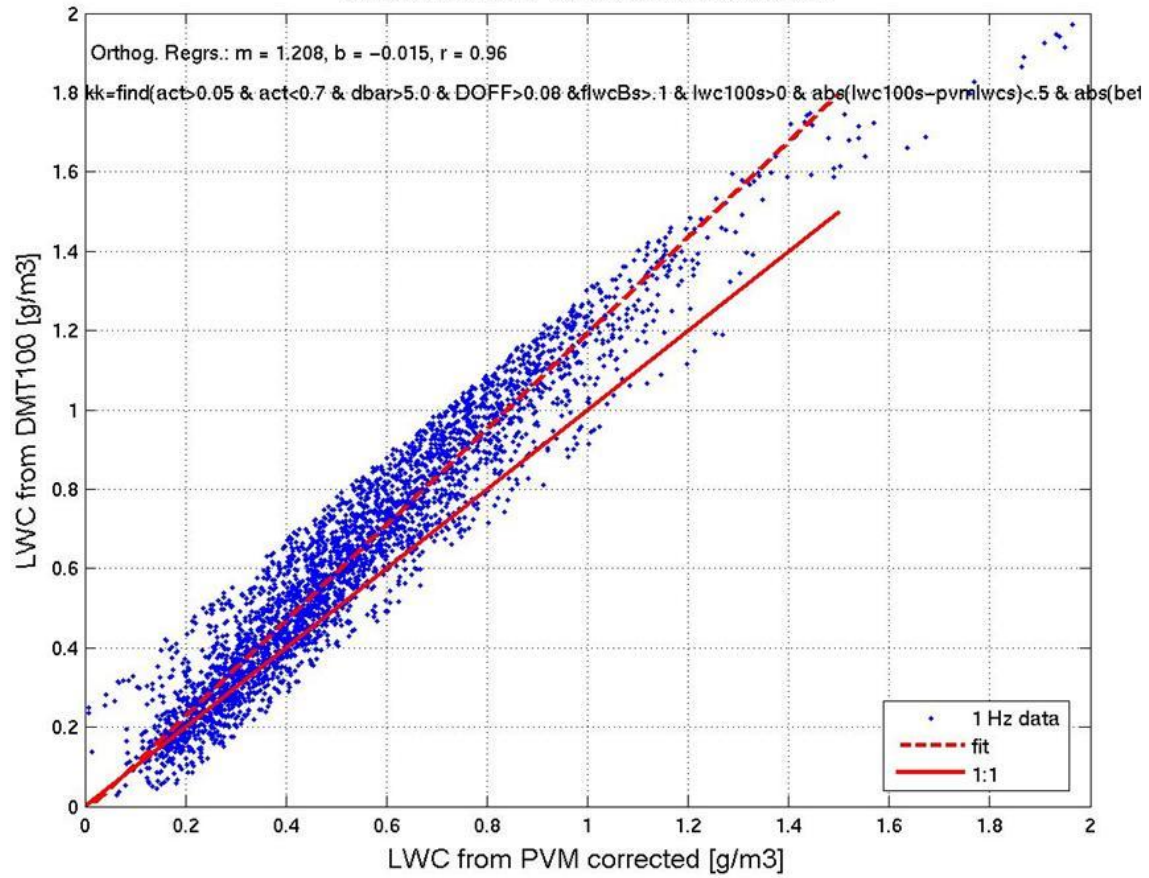
RICO04 UWKA: 20050104 to 20050124



RICO04 UWKA: 20050104 to 20050124



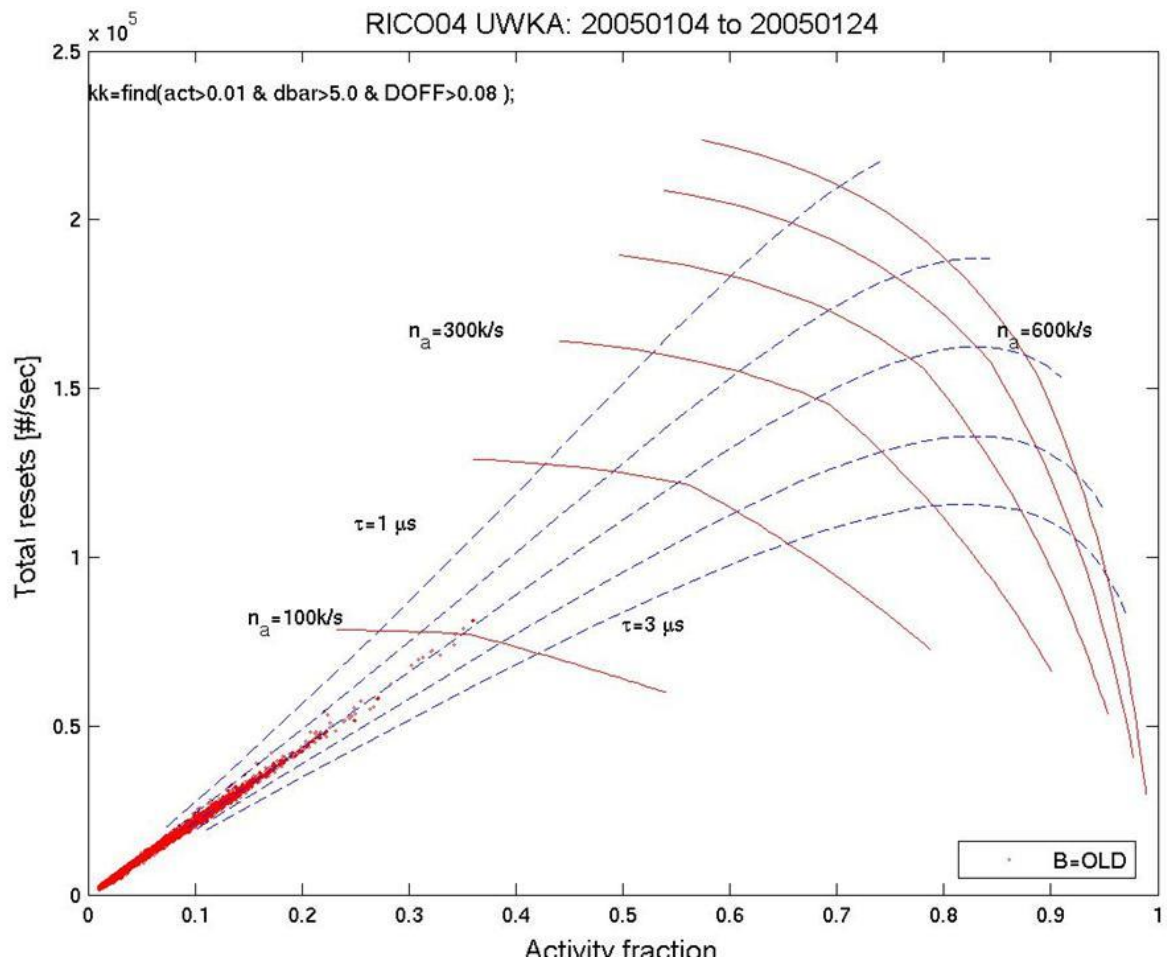
RICO04 UWKA: 20050104 to 20050124



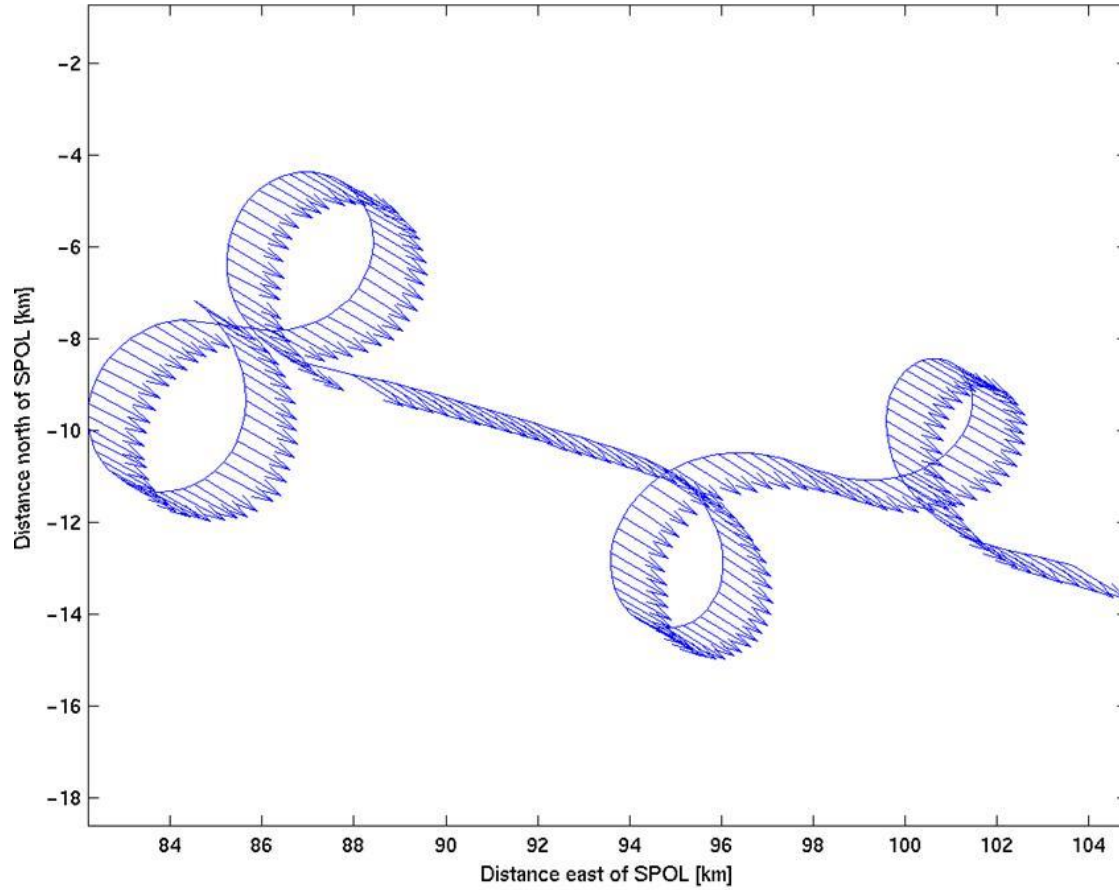
UWKA/RICO-Phase II

### LS Fit slopes

	PVMLWC	
	uncorrected	corrected
FSSP/PVM	0.99	0.76
DMT/PVM	1.49	1.21

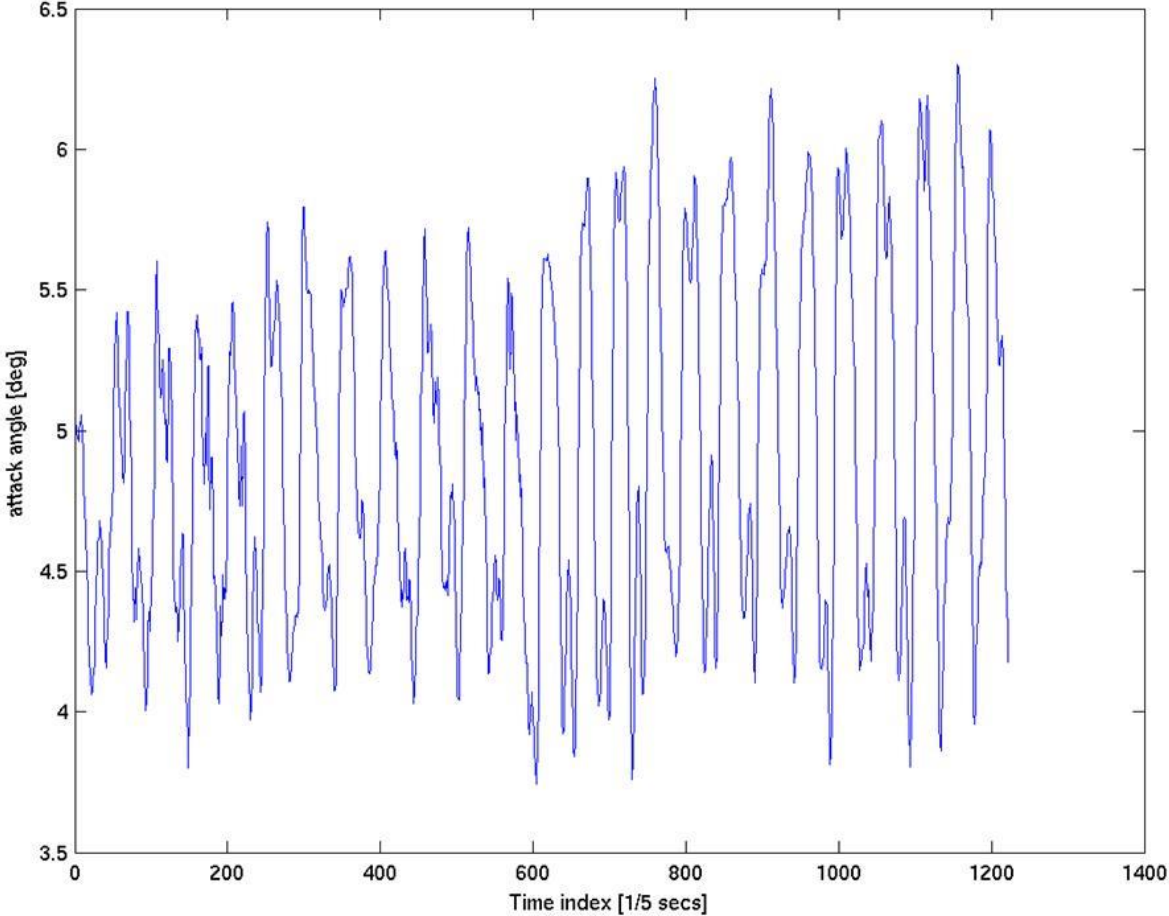


UWKA: RICO 20050124 -- high level



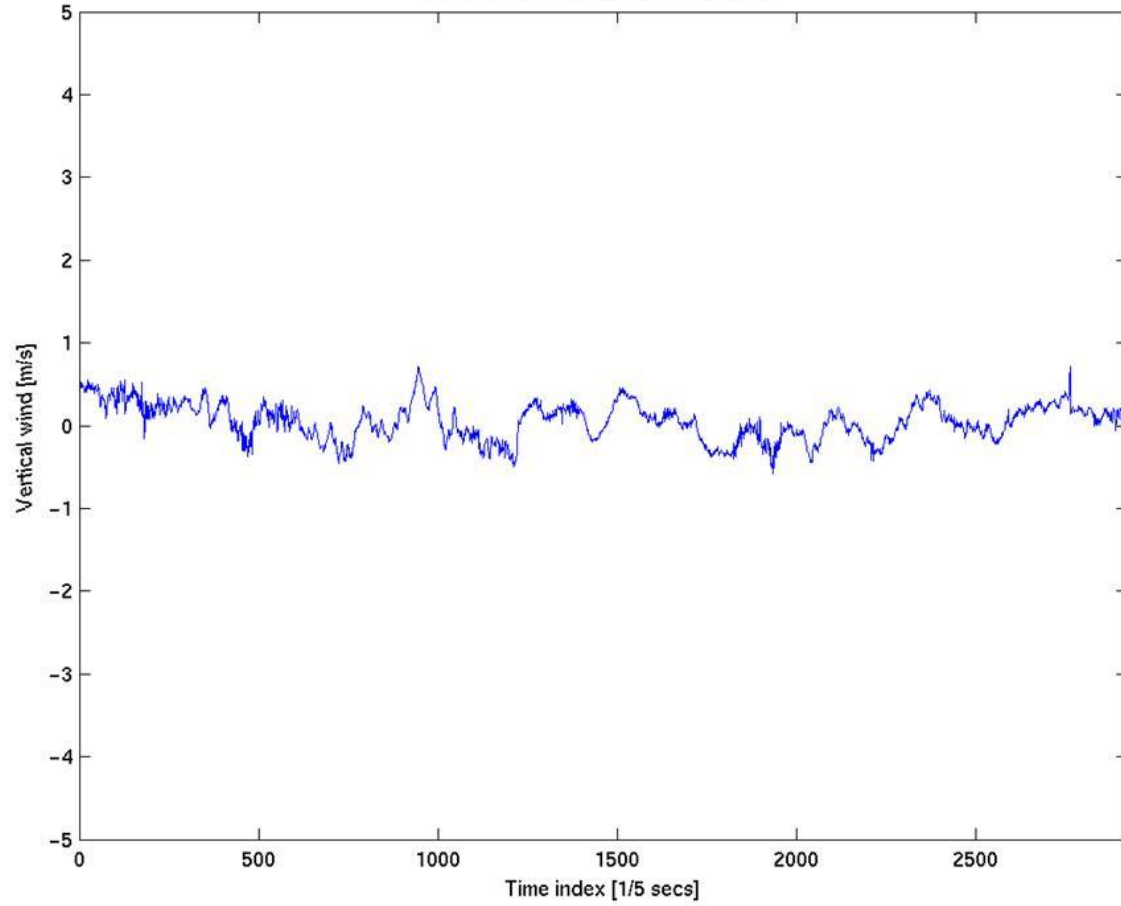


UWKA: RICO 20050124 -- high level

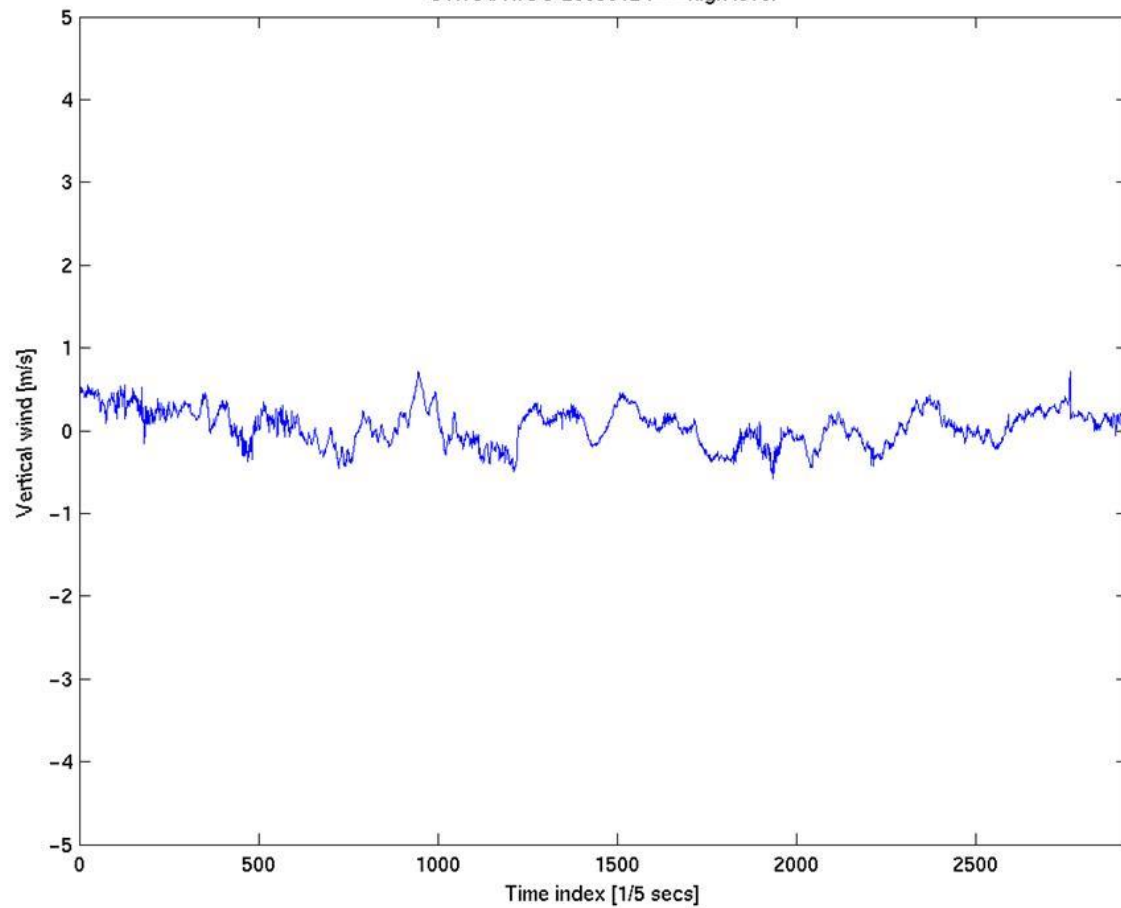




UWKA: RICO 20050124 -- high level



UWKA: RICO 20050124 -- high level



## UWKA in RICO

- **UW project manager for RICO: Larry Oolman**
  - [ldoolman@uwyo.edu](mailto:ldoolman@uwyo.edu)
  - 307-766-2665
- <http://flights.uwyo.edu/projects/rico04>
  - Login/password rico/antigua
  - 1 Hz and 25 Hz data sets