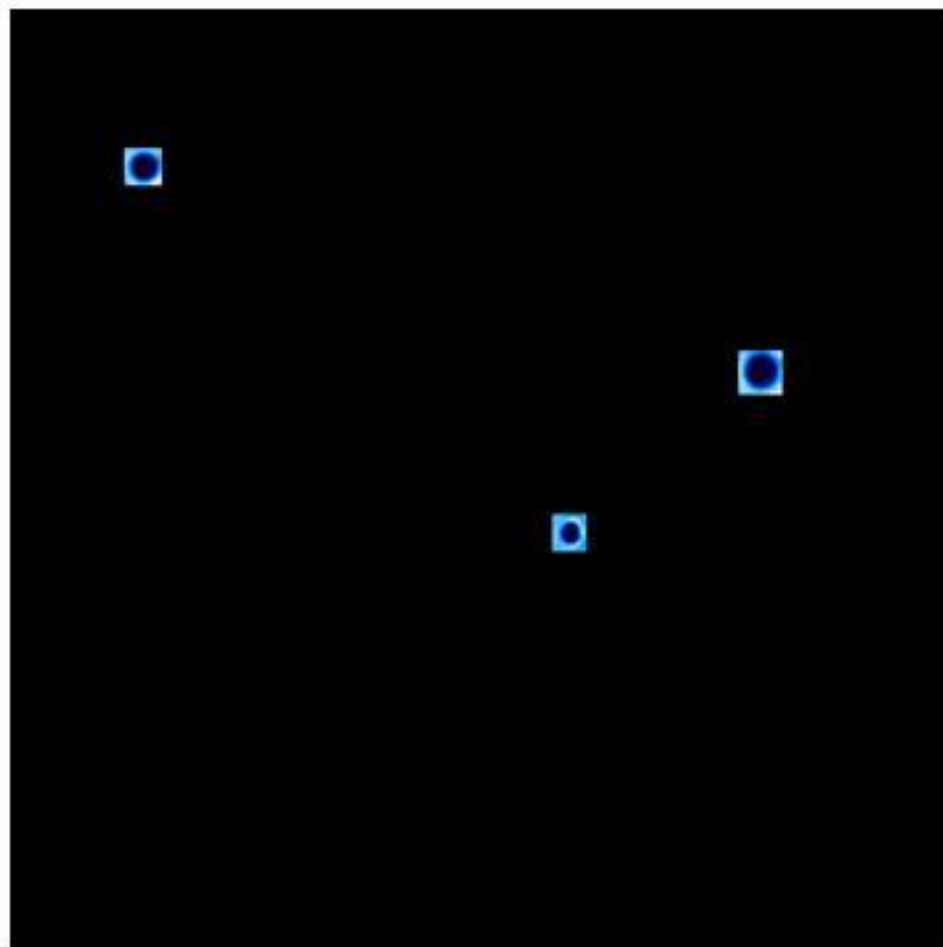


# SPEC RICO Instruments



CPI and 2D-S

# Cloud Particle Imager



**Raw Data Files and Software will be Archived**

# **CPIView**

## *Software*

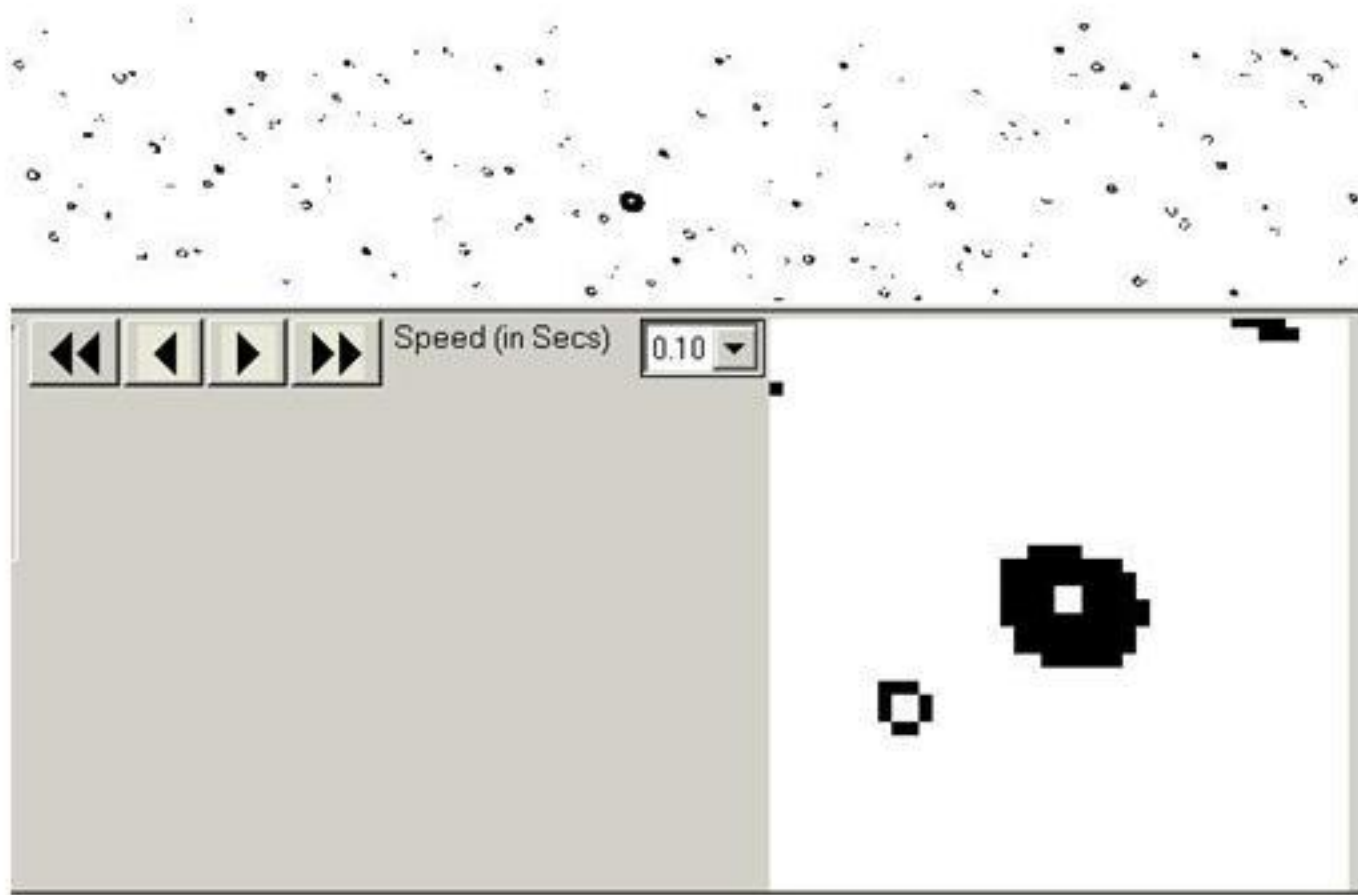
**Produces:**    **Time series**  
                  **PSDs**  
                  **Conditional PSDs**

**Updated Versions Archived as Available**

# Coming CPIVView Updates

- **Special RICO Version under Construction**  
*(Taking advantage of spherical shape)*
- **Probe Bead Calibration is Underway**  
*(See WIKI for details)*

# 2D-S



**Raw Data Files and Software will be Archived**

# **2DSView**

## *Software*

**Produces: Time series**

**PSDs**

**Fishing Statistic**

**Updated Versions Archived as Available.**

**Current code is very crude. Sizes Uncorrected.**



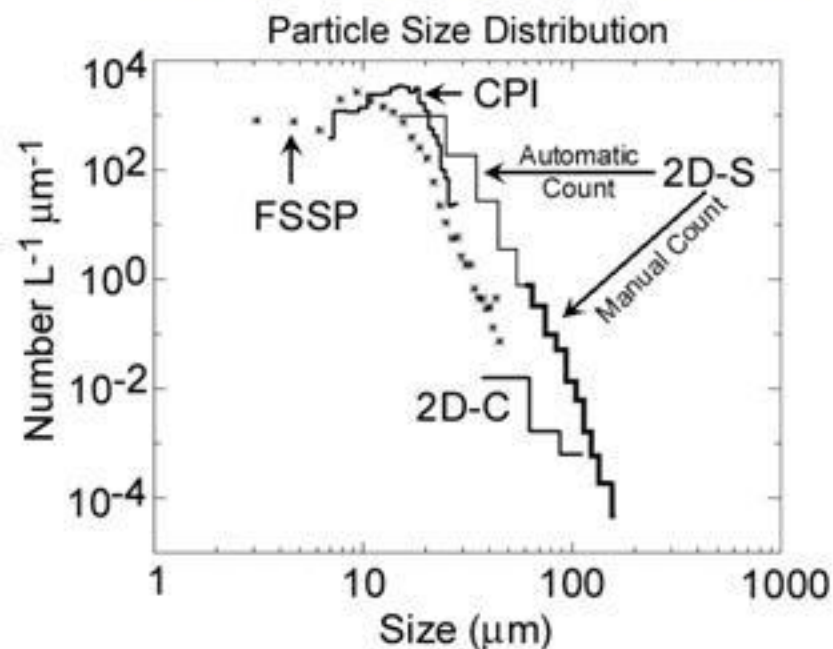
# Coming 2DSView Updates

- *Size corrections based on diffraction theory and probe modeling.*
- *Conditional Sampling: EG:*
  1. *Stereo Particles only.*
  2. *In-Focus Particles only.*
- *Oh so many more Challenges!*



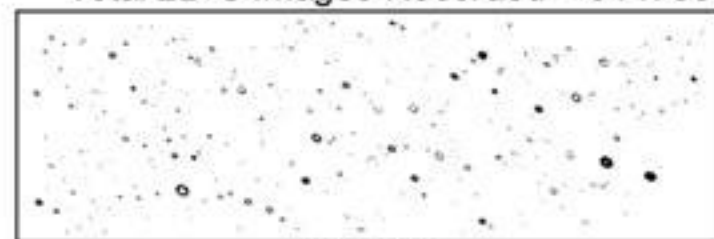


## Compared with 2D-S, 2D-C sees 2% of Drops 60 to 130 $\mu\text{m}$



2D-S Size ( $\mu\text{m}$ )	2D-S Cnts	2D-C Size ( $\mu\text{m}$ )	2D-C Cnts
10	181273		
20	95271	25	0
30	27989		
40	6075		
50	1992	50	30
60	1166		
70	469	75	9
80	326		
90	106		
100	60	100	7
110	19		
120	8	125	0
130	3		
140	0		
150	1	150	0

Total 2D-S Images Recorded = 314758



200  $\mu\text{m}$

Total 2D-C Images Recorded = 46



800  $\mu\text{m}$

## 2D-S Vertical and Horizontal Channel Comparison

