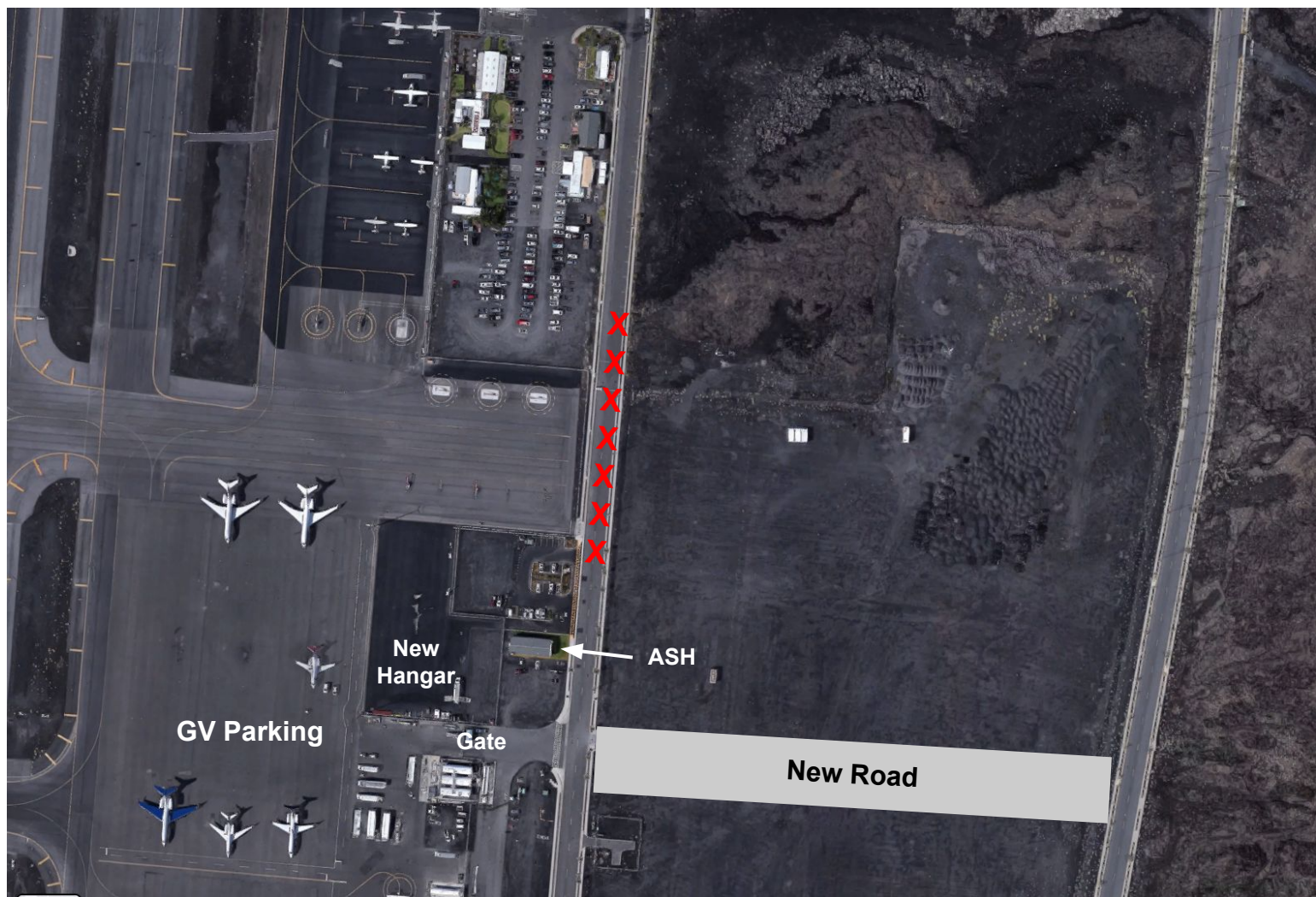


# T13GER Site Survey and COVID Protocols

# Kona



Kona





# ASH Ramp Area





ASH  
Trailer

ASH  
Inside



ASH  
Outdoor  
Area

ASH  
Inside





# Hotels

- Royal Kona Resort
  - Meeting space
  - Spacious rooms with refrigerators
  - Laundry onsite
  - Free wifi
  - Walking distance to stores/restaurants
  - Negotiating rate



# Other

- Lift
  - None at airport - must be rented or shipped
- Consumables: Airgas
  - LN2 available but no transport
  - No dry ice currently being made - supply chain issues
  - Contact information available
- Project Badges

# Anchorage

- FAA Hangar
  - Door may be too short
  - Access more difficult
- Signature Aviation
  - No hangar issues
  - 24x7 access
- Consumables available
  - LN2: 10-20 L dewars
  - Dry ice only in 25 lb blocks





# COVID-19 Information (As of today)

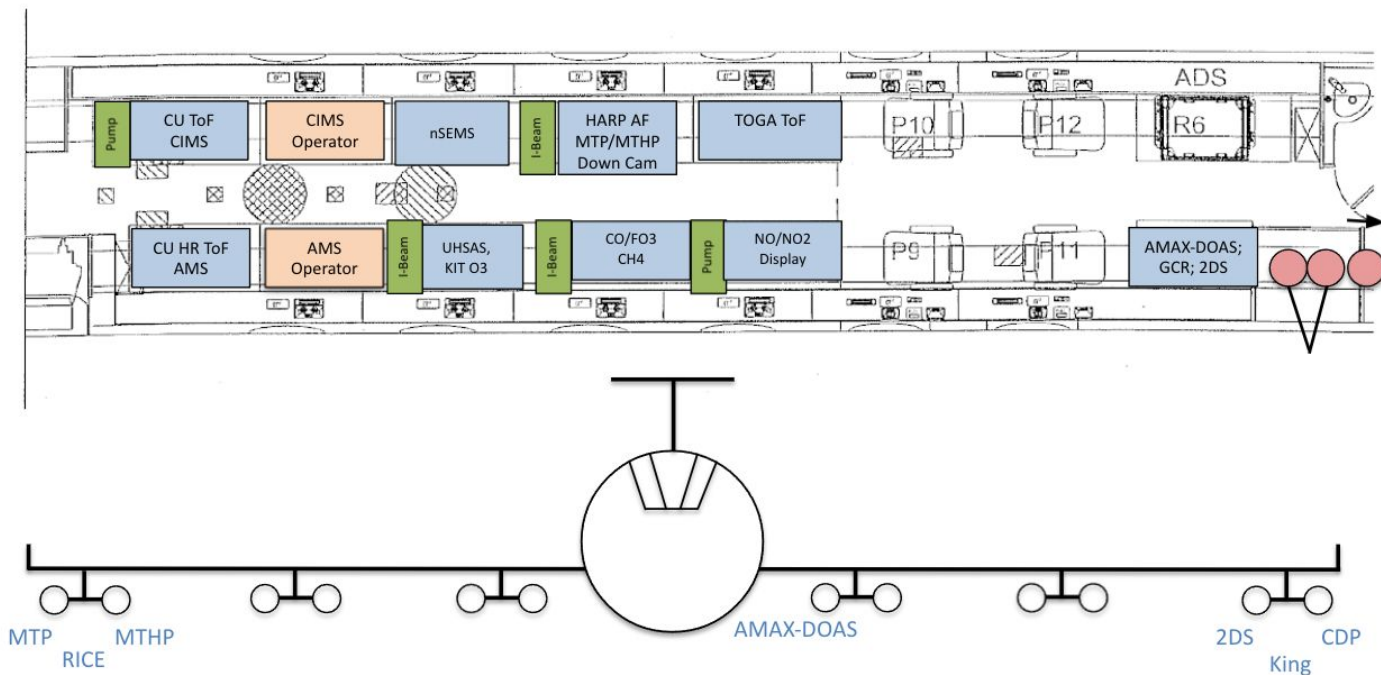
- RAF
  - All participants must be fully vaccinated before coming onsite - no testing exceptions
  - Details on submission of information will be communicated
- Hawaii
  - Safe Travels Hawaii: <https://hawaii-covid19.com/travel/>
  - If vaccinated in US: No quarantine required, must apply for vaccine exemption
  - If not vaccinated or vaccinated outside the US: 10 day quarantine or apply for testing exemption
- Alaska
  - No special steps

# Working at RAF and on the GV

- Access procedures
  - Request access, watch training videos, sign form, submit picture (if outside NCAR)
  - Early January
- COVID Protocols
  - Developed in conjunction with UCAR/HESS
  - Physical distancing and masks required
  - Keep airflow moving in GV cabin
  - Limit cabin numbers
  - Meetings TBD but virtual option will be required



DRAFT Payload  
 TI3GER  
 11/01/2021



Apertures: Lam. Flow Inlet (R1 bottom), nSEMS (R1 top), AMS (L1 top ),  
 KIT O3 (L1 bottom), VCSEL (middle top), CO/FO3/NOx (L5 top),  
 UHSAS (aft bottom VP), TOGA (P10 top)

Cameras: Side (R4 and L3?), Forward (RWO), Downward (fore bottom VP)